



Easier & faster  
maintenance



Less  
downtime

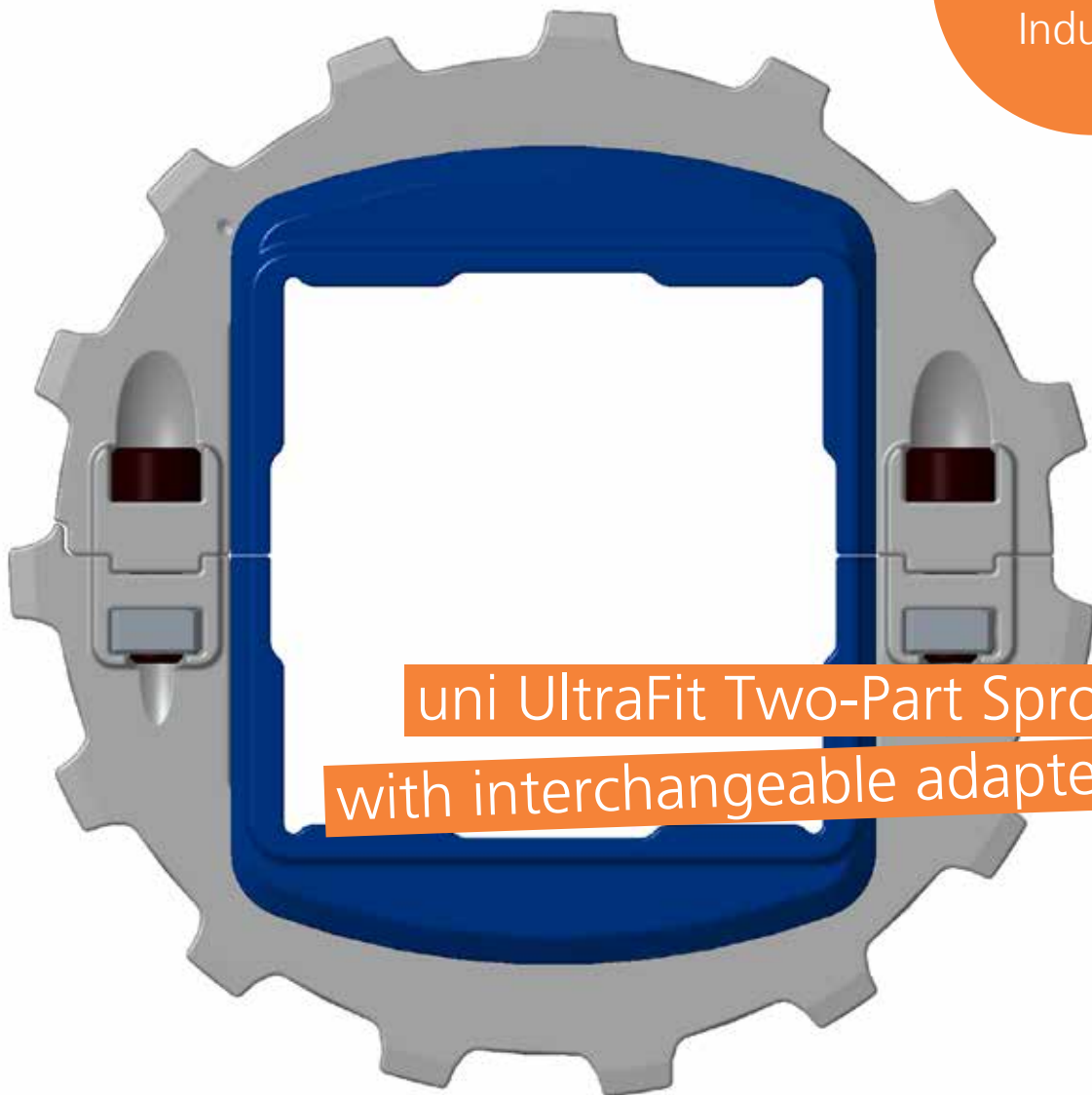


Less  
disruption



Reduced  
costs

New for  
the Corrugated  
Industry



uni UltraFit Two-Part Sprockets  
with interchangeable adapters

# UltraFit Two-Part Sprocket System

– to reduce your maintenance costs

# UltraFit Two-Part Sprocket System

## with interchangeable adapters

The most unique and revolutionary feature in the uni UltraFit Two-Part Sprockets is the built-in adapters. The adapters make it possible to install the uni UltraFit Two-Part sprocket on different shaft sizes.

The wide adapters serving as spacers automatically guarantee perfect distance between the sprockets, ensuring ideal alignment of sprockets across the belt width.

Adapters are available for popular bore sizes and in two widths: 25.0 mm (0.98 in) and 76.0 mm (2.99 in).



UltraFit Two-Part Sprocket System:  
sprocket and adapter

### Unique benefit

– adapters only available with

UltraFit Two-Part Sprocket System

Product family	Teeth	Bore size	
		mm	in
Ammeraal Beltech Modular	12	38.1	1.50
		40.0	1.57
	13	38.1	1.50
		40.0	1.57
	15	38.1	1.50
		40.0	1.57
		60.0	2.36
		63.5	2.50
	16	38.1	1.50
		40.0	1.57
		60.0	2.36
		63.5	2.50
18	38.1	1.50	
	40.0	1.57	
	60.0	2.36	
	63.5	2.50	
19	38.1	1.50	
	40.0	1.57	
	60.0	2.36	
	63.5	2.50	

## Time-saving and cost-cutting innovation

Sprockets are crucial components in belt systems, and replacing them can cause downtime. At Ammeraal Beltech, our drive to create innovative solutions, that reduce maintenance costs and downtime, has led to the development of the UltraFit Two-Part Sprocket System with interchangeable adapters.

The uni UltraFit Two-Part Sprockets are available in a wide range of tooth numbers and popular Metric and Imperial bore sizes to fit most existing systems.

**Ammeraal Beltech Modular Belts** using the new sprocket include:

- uni JCB
- uni QNB
- uni LPB

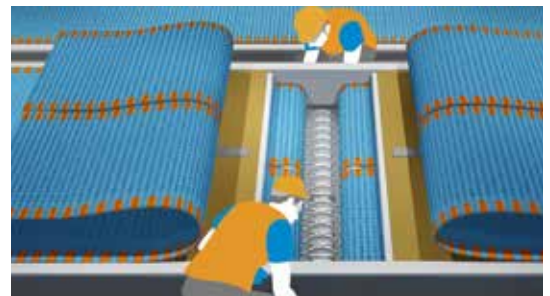


Innovative solution  
 – keeps downtime to a minimum

## Traditional Sprockets

**Difficulties when replacing traditional sprockets include:**

- Complicated replacement procedures leading to long downtime.
- The lifting / removal of heavy components requires the help of additional persons.
- A lack of working space in which to carry out the various steps of this operation.



## NEW uni UltraFit Two-Part Sprockets

**Advantages when using the UltraFit System:**

- Quick and simple installation / replacement of sprockets.
- Easy re-alignment of the belt and better subsequent performance, thanks to adapters.
- A one-person job, without heavy lifting.

**All this adds up to:**

- **Outstanding performance**
- **Reliability**
- **Efficiency**



**Easier & faster**  
maintenance



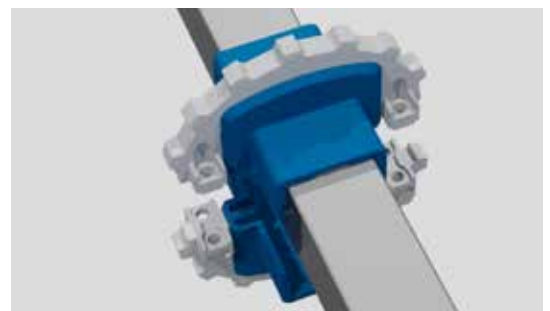
**Less**  
downtime



**Less**  
disruption



**Reduced**  
costs



Reduces maintenance costs  
 and total cost of ownership